

## **The Covid Catch-up Premium**

Children and young people across the country have experienced unprecedented disruption to their education as a result of coronavirus (COVID-19). Those from the most vulnerable and disadvantaged backgrounds were amongst those hardest hit.

During lockdown, the government announced £1 billion of funding to support children and young people to catch up. This included a one-off universal £650 million catch-up premium for the 2020 to 2021 academic year to ensure that schools have the support they need to help all pupils make up for lost teaching time.

## **How will we spend our allocated Covid Catch-up Premium?**

We will be spending our Covid Catch-up Premium allocation for the 2020-2021 academic year of £16,160 in the following ways:

- A comprehensive programme of reading, writing and maths booster sessions in Year 6 for targeted children delivered by experienced teachers
- Small catch-up interventions for targeted pupils in Y2, 4 and 5 taught by experienced class teachers
- A targeted intervention programme for pupils across the school delivered by Teaching Assistants
- The Pastoral Support Worker provides targeted support to an identified cohort of vulnerable pupils, working on attitudes to learning, social skills and other barriers to learning

## **How will the effect of this expenditure on the educational attainment of the pupils at our school be assessed?**

- All pupils undertook a baseline assessment in the Core Subjects upon their return to school in September.
- End of term teacher assessments will provide us with key information so we can assess how effectively we are 'closing the gap' for all pupils following lockdown, and also to measure the impact of the Catch-up Premium interventions detailed above.
- Termly pupil progress meetings with teachers and senior leaders will further refine provision for the Catch -up Premium and allow for flexibility within the system, so that groups can be adjusted accordingly.
- Weekly professional dialogue between Catch-up teachers and class teachers will closely monitor the progress of pupils and adjust provision accordingly.

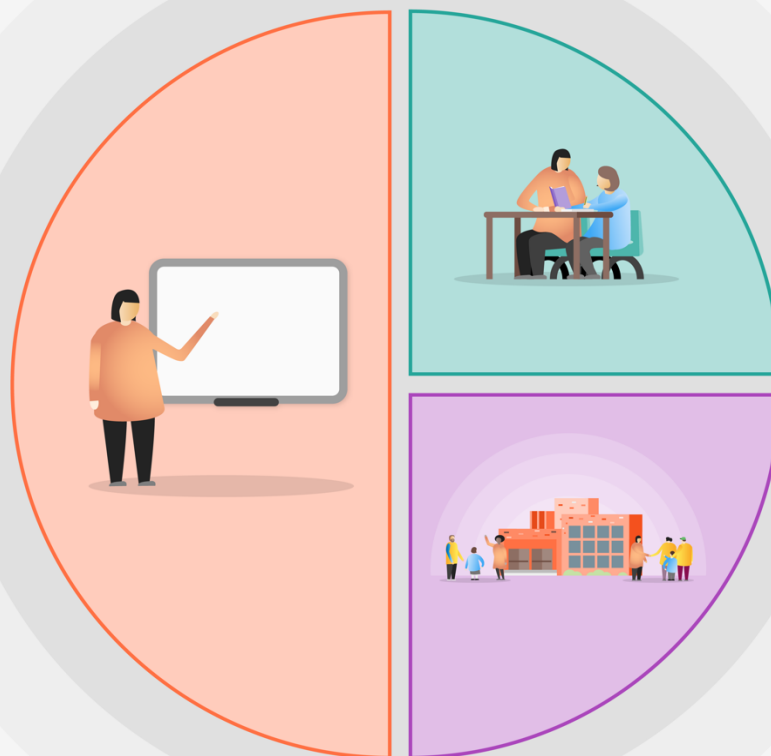
**+ We can do everything together, loving and learning through God +**

# COVID19 SCHOOL PLANNING 2020-21 – A TIERED MODEL

## Ingrave Johnstone C of E Primary School

### 1 Teaching

- Quality first teaching for all pupils supported by an effective programme of focused CPD for teachers and support staff.
- A broad and balanced, engaging curriculum that focuses on rapid acquisition of key skills and understanding
- Clear progression of key skills and understanding which builds on prior learning.
- Whole class reading approach using Accelerated Reader, quality class reading texts and reading VIPERS.
- Focus on key skills for reading, writing and maths- use of on-line resources to support this: TT Rockstars and Google Classroom for home learning.
- Clear strategy for home learning through use of individualised reading and phonics programmes, Spelling Zappers, and home learning via Google Classroom and resources accessed through home learning books.
- Focus in EYFS on oracy and early language development



### 2 Targeted academic support

- Reading, writing and maths booster sessions in Year 6 for targeted children
- Small catch-up interventions for targeted pupils in Y2, 4 and 5 taught by experienced class teachers
- Targetted intervention programme for pupils by Teaching Assistants
- Pastoral Support worker provided targeted support to identified cohort with attitudes to learning, social skills and other barriers to learning

### 3 Wider strategies

- Pastoral support/well-being accessed through PSW
- On-going curriculum development CPD
- Use of PSHE/ Well-being lessons to support pupils
- Drop-in sessions from clergy to support families
- Regular contact with vulnerable families to promote and sustain engagement